

No:

SB199-20

Date:

07/04/20

Issue:

No. 1

Subject:

Elite 6 Repair and Maintenance Manual Update ref ETS King Pins

Please note in chapter 74 of the Elite 6 Repair and Maintenance Manual, page 74.19 quotes the following for removing the king pin:

‘Using a suitable tool drive the swivel pin down and out of the axle beam releasing the swivel from the axle beam’.

Due to the king pin having a collar located on the upper half you need to press the swivel pin up and out of the axle beam, the red circles in Fig. 1&2 show the location of the collar.

Fig. 1

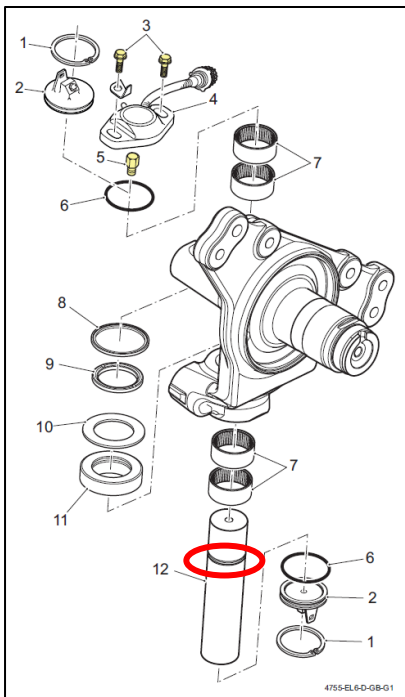


Fig. 2



On page 74.20 point 7 tells you to heat up the axle bore between 100-150° C.

Please Note: As well as this you need to immerse the king pin in a highly insulated container of liquid nitrogen 10 cm in depth to cool it down for 1 hr, or until the liquid nitrogen starts to boil (point where liquid nitrogen turns into nitrogen gas) before pressing the king pin into the axle.



Use appropriate PPE when working with liquid nitrogen and cooled components. Liquid nitrogen exists between -210°C and -196°C, below -210°C it is a solid and above -196°C it starts to boil and evaporate.

Use this Bulletin as an update until the manual is updated. Please note ETS axles on Elite 2 are of the same design